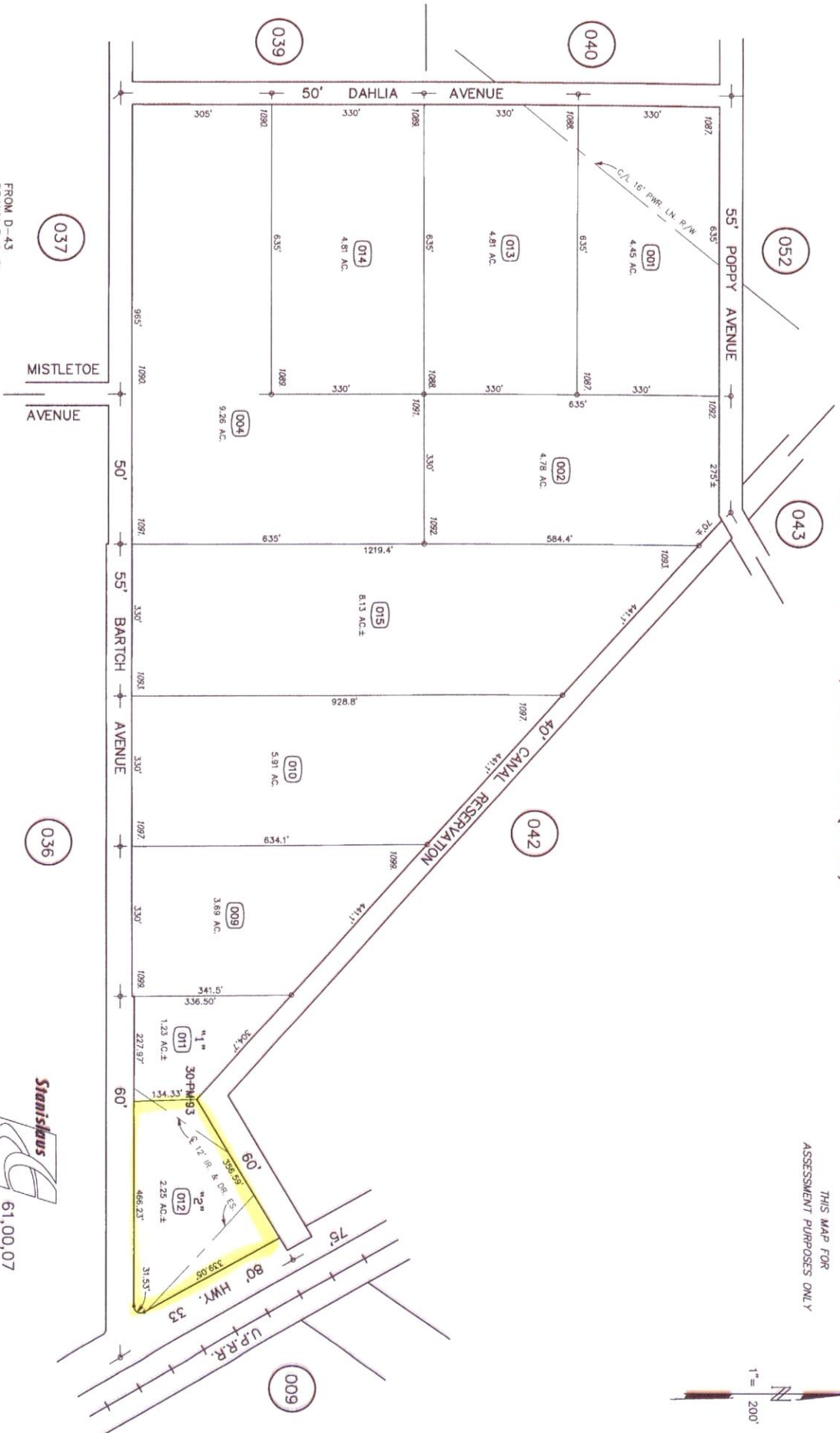
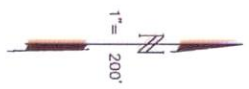


POR. SECS. 31 & 32 T.5S. R.8E. M.D.B. & M.
 POR. OF RESUBDIVISION LTS. 402 & 403 PATTERSON COLONY-SUB-TRACT NO. TWO
 LOTS 1087 THRU 1093, 1098 & 1099 (06M21)

086 000
 005 040

048 - 041

THIS MAP FOR
 ASSESSMENT PURPOSES ONLY



FROM D-43
 DRAWN 3-1-81
 REVISED 2-11-00 MR. 3-30-06 (V)DH



61,00,07

048 - 041