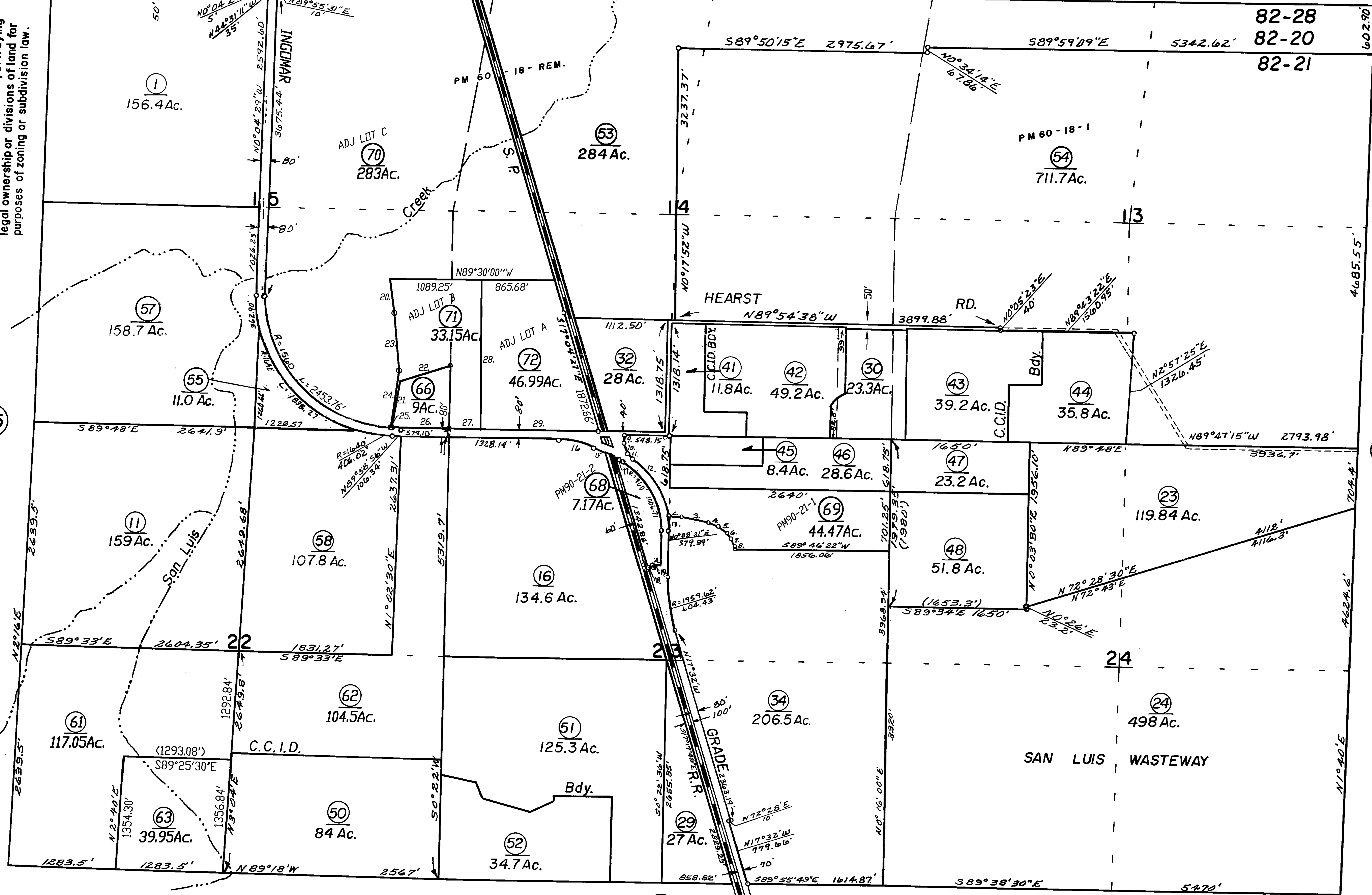
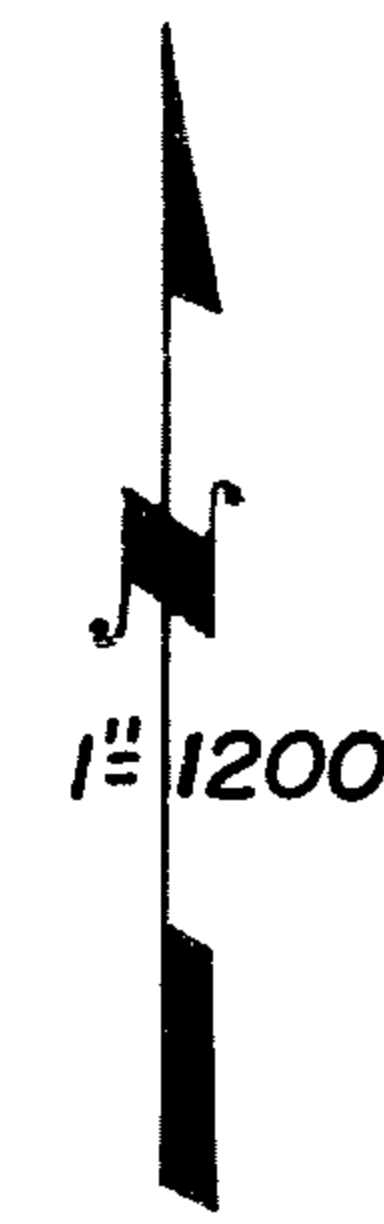


NOTE - This map is for Assessment purposes only. It is not to be construed as portraying legal ownership or divisions of land for purposes of zoning or subdivision law.



REDRAWN 9/65  
 REVISED 12/73  
 9-00  
 12-28-04

25. R=1560'	R=13.07'	17. S 62°31'43"E	42.56'	9. S 0°03'26"W	106.07'	1. S 0°07'30"W	550'
26. N89°34'12"W	685.78'	18. N 89°56'35"W	62.98'	10. S 5°40'00"E	110.00'	2. S88°55'36"W	149'
27. N89°30'00"W	374.46'	19. N 17°32'13"W	29.79'	11. S 41°30'30"E	73.81'	3. N79°34'34"W	325'
28. N00°22'42"E	1785.26'	20. N07°11'39"W	406.69'	12. R 104.0'	1051.53'	4. N73°39'04"W	127'
29. N89°30'00"W	1427.32'	21. N10°11'28"E	558.7'	13. N 0°08'21"E	326.80'	5. N54°32'24"W	123'
		22. N71°01'50"E	639.30'	14. S 89°52'30"E	95.08'	6. N37°13'14"W	83'
		23. N04°35'14"W	687.04'	15. N 62°31'30"W	122.74'	7. N35°53'04"W	104.13'
		24. N08°21'38"E	702.32'	16. R 960'	459.39'	8. N0°15'56"E	22'

11

NOTE - Assessor's Block Numbers Shown in Ellipses  
 Assessor's Parcel Numbers Shown in Circles